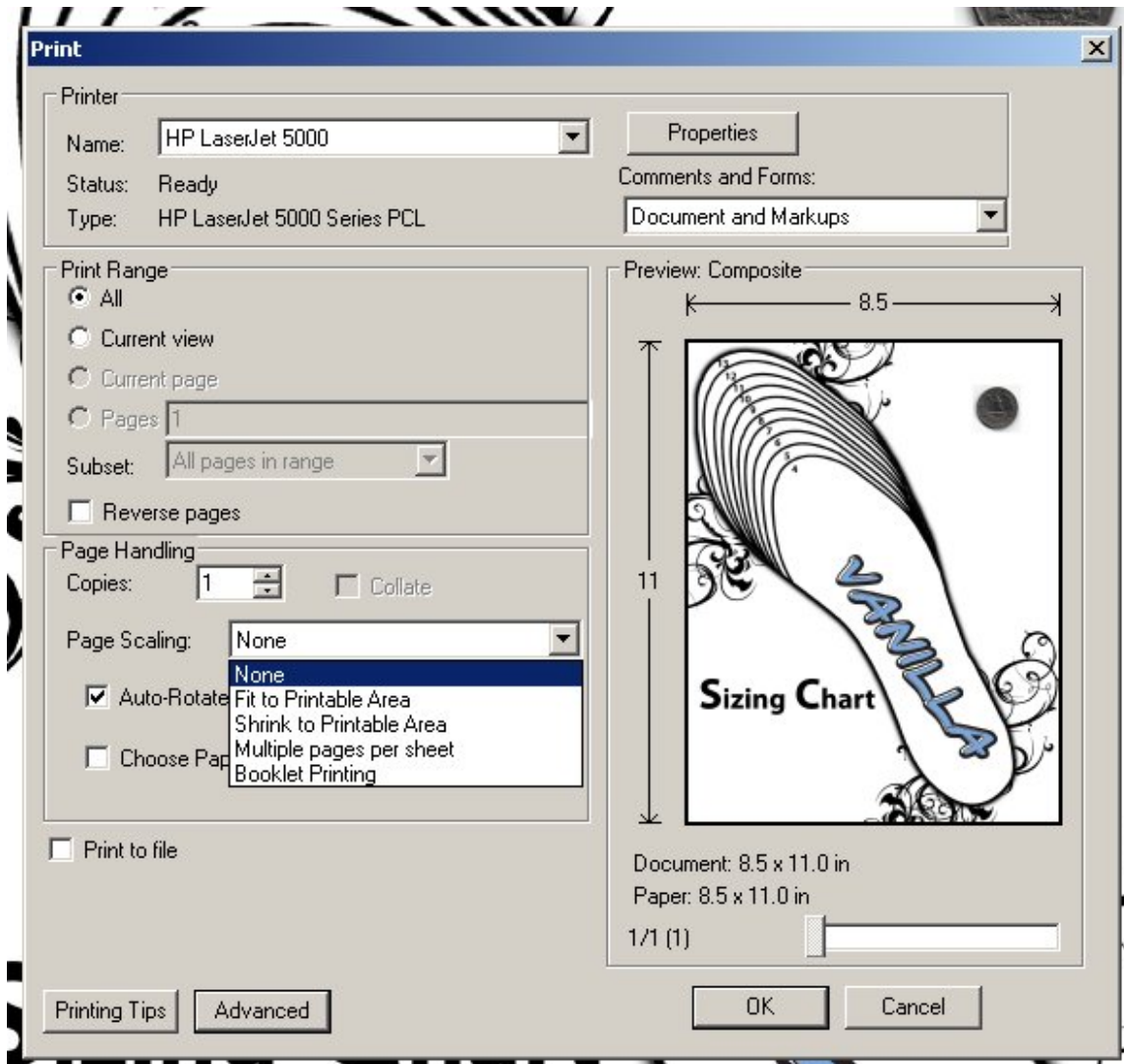


Sizing Guide

Brought to you by RCSports.com

To correctly size yourself with the insole chart on the second page, you must first make sure that the document has printed correctly. To do this, be sure that "Page Scaling" is set to **None** in your print settings.



You can confirm that the page has not been scaled by using a US quarter as a test. If the quarter on the page and the quarter in your hand are the same size, you know that the sizing guide is correct.

For more sizing guides and information about your favorite skate products, be sure to visit RCSports.com.

Sizing Chart

Each Line should be
exactly 1 inch when
printed correctly



W
A
N
T
A

